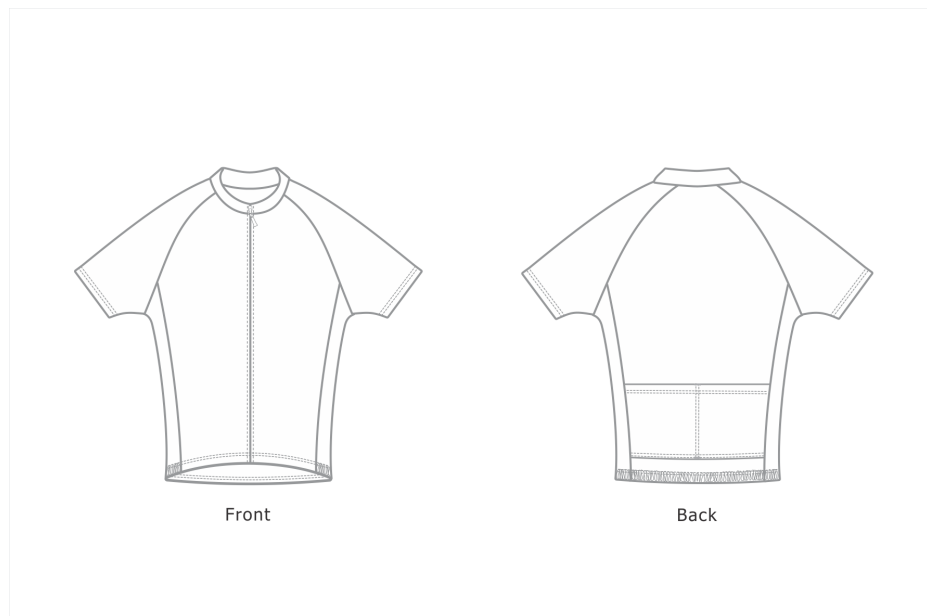


GARMENT SPECIFICATION

Pattern 724 - CYCLING JERSEY MENS YOUTH

Friday, August 2, 2019



Measurements in cm

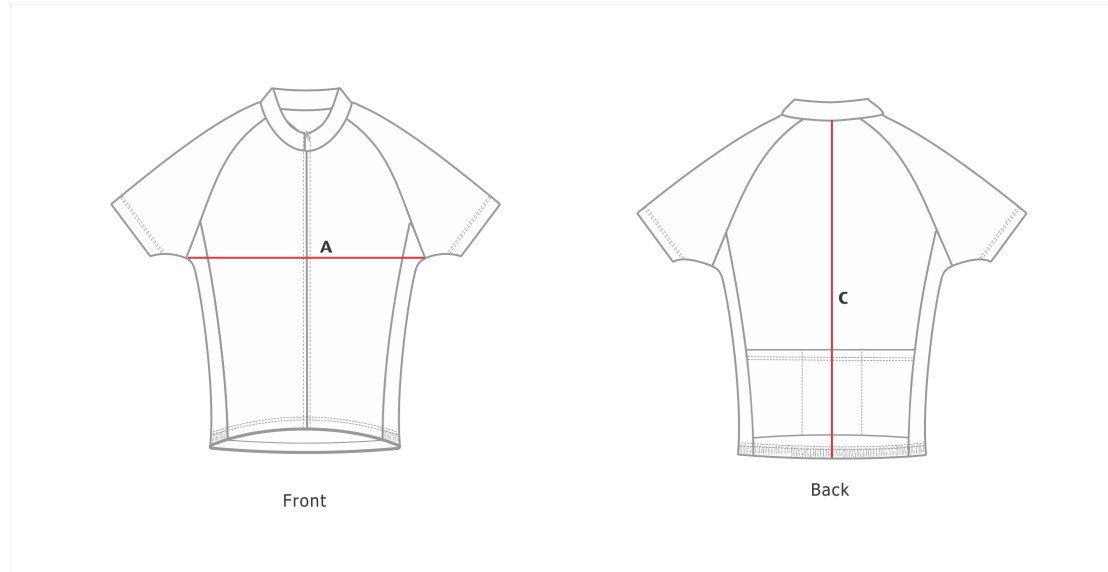
Tolerance +/- cm

	4Y	6Y	8Y	10Y	12Y	14Y	16Y
A. HALF CHEST	32.0	34.0	36.0	38.0	40.0	42.0	44.0
B. HALF HEM	19.0	21.0	23.0	25.0	27.0	29.0	31.0
C. CENTRE BACK	50.0	52.0	54.0	56.0	58.0	60.0	62.0
D. SLEEVE LENGTH	28.0	29.5	31.0	32.5	34.0	35.5	37.0
E. SLEEVE OPENING	9.5	10.0	10.5	11.0	11.5	12.0	12.5

GARMENT SPECIFICATION

Pattern 6145 - CYCLING JERSEY WOMENS ADULT

Wednesday, February 10, 2021



Measurements in cm

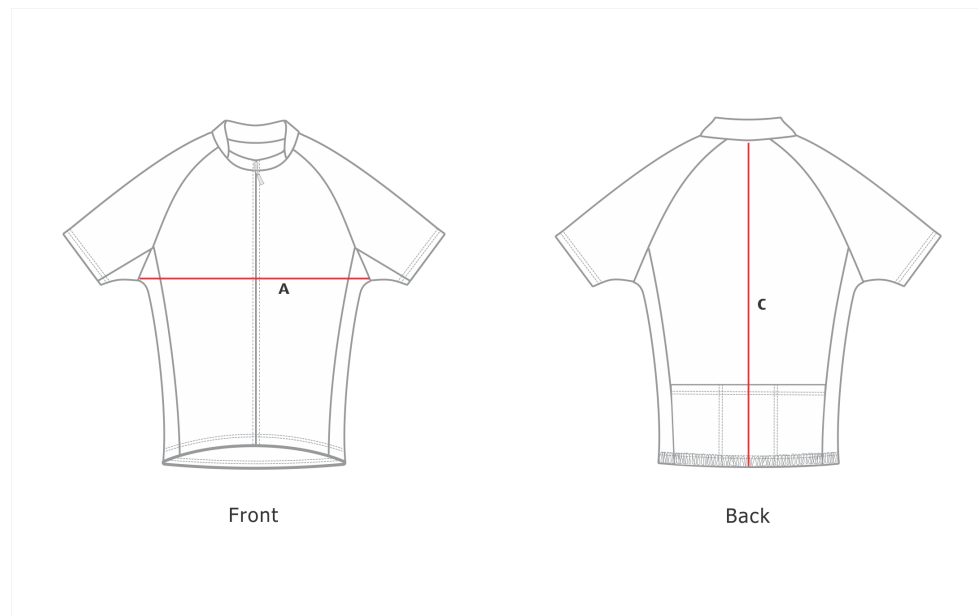
Tolerance +/- cm

	6	8	10	12	14	16	18	20	22	24
A. HALF CHEST	43.0	45.0	47.0	49.0	51.0	53.0	55.0	58.0	60.5	62.5
B. HALF HEM	31.0	33.0	35.0	37.0	39.0	41.0	43.0	46.0	49.0	52.0
C. CENTRE BACK	57.5	59.5	61.5	62.5	63.5	64.5	66.5	67.5	68.5	69.5

GARMENT SPECIFICATION

Pattern 3858 - PERFORMANCE FIT CYCLING JERSEY MENS ADULT

Friday, July 6, 2018



Measurements in cm

Tolerance +/- cm

	XS	S	M	L	XL	2XL	3XL	4XL	5XL
A. HALF CHEST	45.0	47.0	49.0	51.0	53.0	55.0	57.0	59.0	61.0
B. HALF HEM	31.0	33.0	35.0	37.0	39.0	41.0	43.0	45.0	47.0
C. CENTRE BACK	62.0	64.0	66.0	68.0	70.0	72.0	74.0	76.0	78.0